

ANNUAL GENERAL MEETING 24



 **MAPFRE**

JOSÉ MANUEL INCHAUSTI

FIRST VICE CHAIRMAN OF MAPFRE



We are by your side every step of the way, accompanying you to move forward with peace of mind, contributing to the development of a more sustainable and supportive society.



We care about what matters to you

A COMMITTED COMPANY

We aspire to create value for all stakeholders



COMMITTED TO DIVERSITY

31,000
employees

250,000
intermediaries
and
collaborators

38
active countries

81
nationalities

5
generations

MAPFRE *Where your time is meaningful*

COMMITTED TO FULL EQUALITY

46.7%

Parity on the Board of Directors

42.5%

Women hold 42.5% of job positions of responsibility

Closing the gender **pay gap**

BOARD OF DIRECTORS



Ana Isabel Fernández Álvarez



Mª Leticia Freitas Costa



Rosa María García García



Mª Amparo Jiménez Urgal



Catalina Miñarro Brugarolas



Pilar Perales Viscasillas



Elena Sanz Isla



Antonio Huertas Mejías



José Manuel Inchausti



Fernando Mata



Antonio Gómez Ciria



Francisco J. Marco Orenes



Antonio Miguel-Romero de Olano



Eduardo Pérez de Lema



Francesco Paolo Vanni D'Archifari

COMMITTED TO INCLUSION

96.6%
of workforce
on permanent
contracts

+1,000
people with
a disability

**Ageing
Project**

Specific
programs for
LGBTI+
groups

BROAD RANGE OF OPPORTUNITIES FOR THOSE WHO WORK WITH US

81,000
intermediaries

125,000
providers

€4.5BN
in annual billing

PEOPLE WHO TAKE CARE OF PEOPLE

CORPORATE VOLUNTEERING

21.3%
of global
workforce

1,997
activities

127,000
beneficiaries

30 MILLION CUSTOMERS

MULTICHANNEL PHILOSOPHY

4,700
Own
offices

7,500
Banking
partners'
offices

Differentiated service:
NPS® 92.9%

A VOCATION TO INNOVATE

**THE AGE OF ARTIFICIAL
INTELLIGENCE IS HERE**

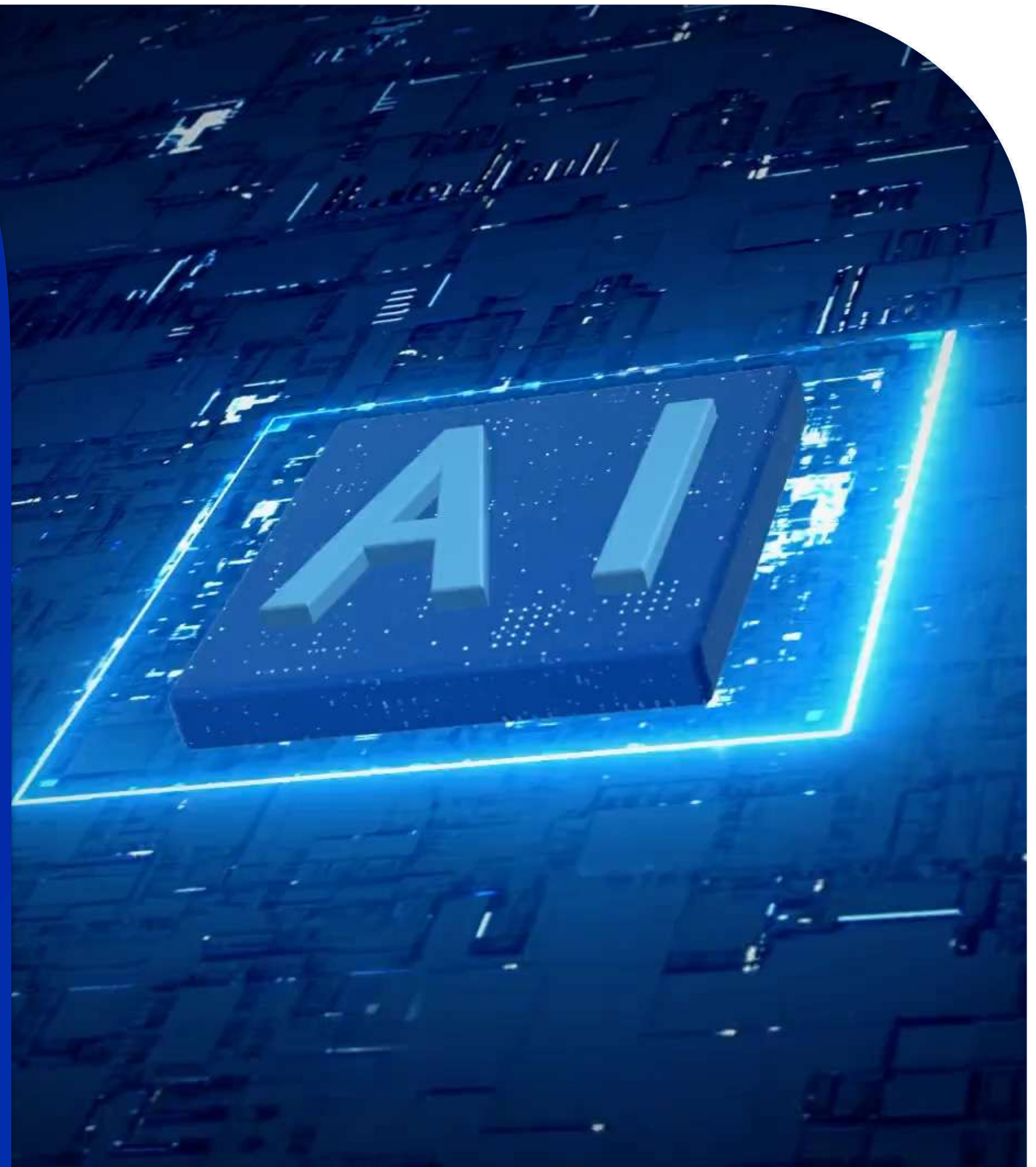
+90
projects
underway

6
GAI projects

40
being studied

MAPFRE Open Innovation:

- +2,500 startup projects analyzed, with 50 of them accelerated
- +3 million MAPFRE clients benefitting from solutions



COMMITTED TO SUSTAINABILITY

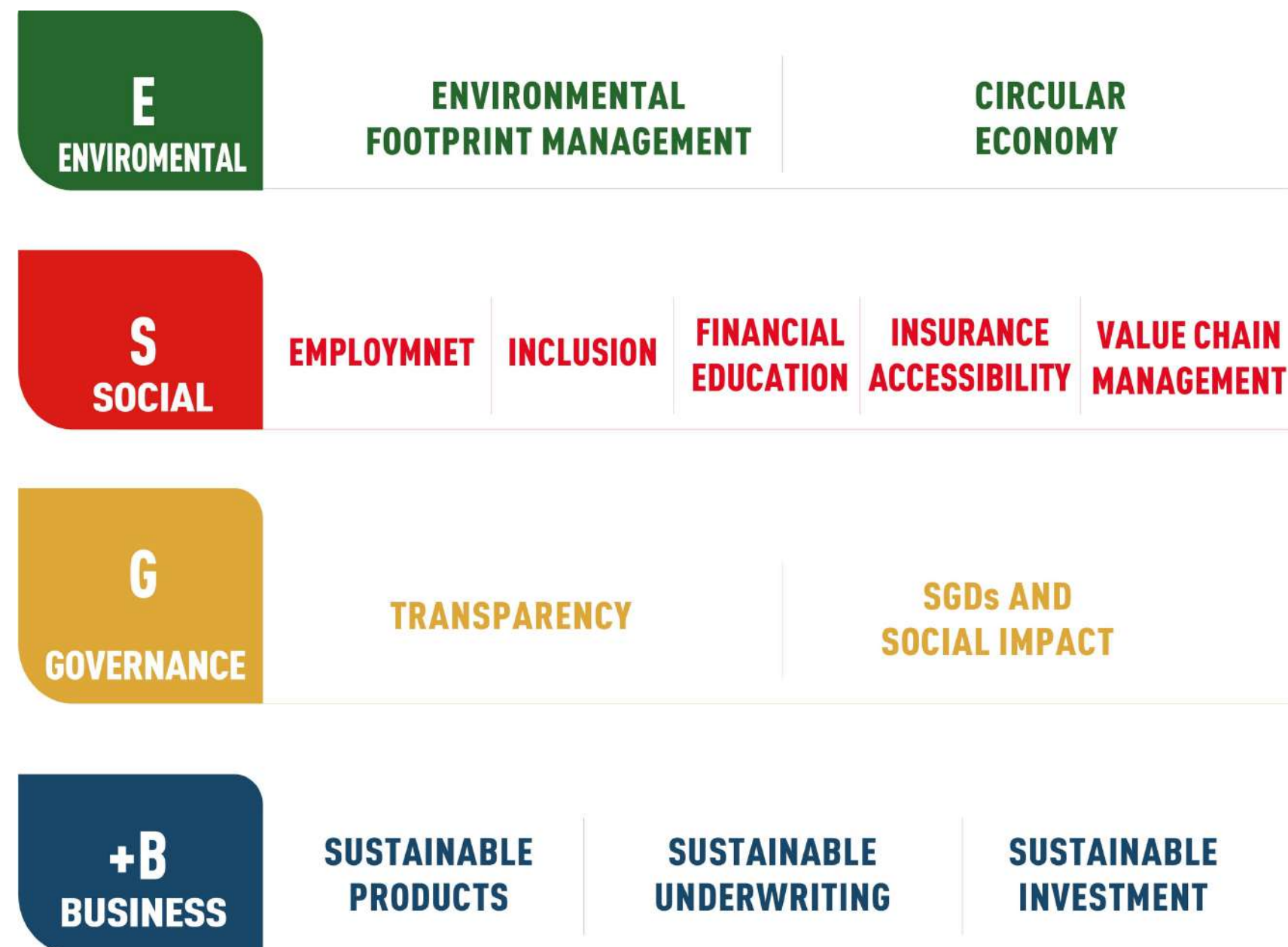
Compliance with plan **99.4%**

We're reducing our global carbon footprint **25%** vs 2019

Providers approved under ESG criteria **10,800**

ESG+B

Lines of action



COMMITTED TO SUSTAINABILITY

99.4% compliance with objectives established

FINANCIAL EDUCATION

96.6% of investment portfolio qualified in line with ESG criteria

INSURANCE ACCESSIBILITY



“MAPFRE na Favela”

NET-ZERO ASSET OWNER ALLIANCE:
Reduction in greenhouse gas emissions of 43% by 2030

The background of the slide is a photograph of the MAPFRE headquarters building, a modern glass and steel structure. In the foreground, there is a large red sign with the MAPFRE logo and the text 'MAPFRE SEDE SOCIAL'. A white arrow points upwards from the sign towards the building.


MAPFRE
SEDE SOCIAL

EDIFICIO

**A COMPANY WITH
A SOLID REPUTATION**

Brand Finance[®]

10th most valuable
brand in Spain


merco

5th in ranking
of the Top 100
companies with the
best reputation



Bloomberg Gender
Equality Index

A woman in a beige coat and dark pants walks from left to right across a city street. She is carrying a dark blue bag. In the background, there is a light-colored building with windows and a bright red door that is slightly ajar. The scene is captured in a cinematic style with soft lighting.

Fundación **MAPFRE**

1975-2025: 50 years

BUILDING A MORE HUMANE FUTURE



ACCIDENT PREVENTION

ROAD SAFETY

HEALTH PROMOTION

FINANCIAL AND INSURANCE EDUCATION

ART AND CULTURE

SOCIAL ACTION

AGEING OPPORTUNITIES

INTERMEDIATE ORGANIZATION
FOR THE ESF PLUS



+6.7
million in-person
beneficiaries of our
programs and activities

LATIN AMERICA
78,000
people in receipt
of a comprehensive
education

TV AND DIGITAL
CAMPAIGN
49
million people

Impact on 11 SDGs





 **MAPFRE**

We care about what matters to you

**ANNUAL GENERAL
MEETING 24**



 **MAPFRE**

Thank you

JOSÉ MANUEL INCHAUSTI

First VICE CHAIRMAN OF MAPFRE